



## 16c Baldock Road, Hitchin, SG5 4NZ

**£1,500,000**

Located in Stotfold, this unique offering comprises two detached chalet bungalows, both benefiting from garages, with one having been partially converted to provide first-floor office space.

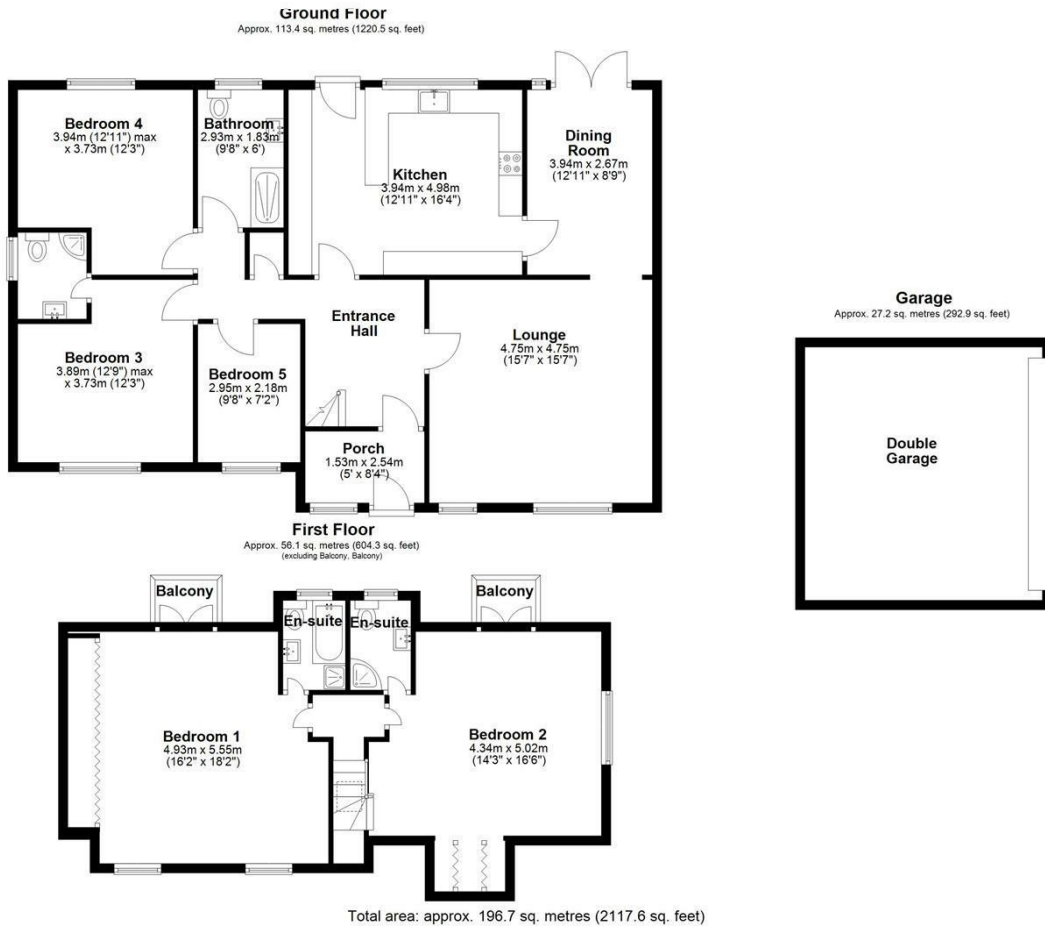
Situated just off Baldock Road and set behind private electric gates, this exceptional opportunity is ideal for multi-generational living or those seeking versatile accommodation.

The first property offers five well-proportioned bedrooms, three of which benefit from en-suite facilities, in addition to a family bathroom. It is further complemented by a detached double garage.

The second property provides three bedrooms and two bathrooms, along with a triple garage. The double garage has been converted to include office space above, with additional planning permission in place to convert the remaining ground floor space, if desired.



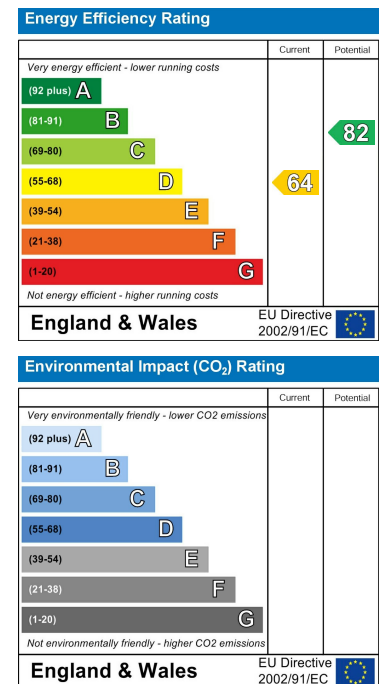
## Floor Plan



## Area Map



## Energy Efficiency Graph



These particulars, whilst believed to be accurate are set out as a general outline only for guidance and do not constitute any part of an offer or contract. Intending purchasers should not rely on them as statements of representation of fact, but must satisfy themselves by inspection or otherwise as to their accuracy. No person in this firm's employment has the authority to make or give any representation or warranty in respect of the property.

**Address:** Suite 2, First Floor, Unit B, Balbir House Norton Green Road, Stevenage, SG1 2LP  
**Tel:** 01438 584400  
**Email:** hello@butlerresidential.co.uk